

Manuel Velázquez

PLASTICITIES



FOR WOODWIND TRIO

Esta pieza fué compuesta como parte de la Red de Compositores Contemporáneos para ser estrenada por:
Mariana Chávez-Lara, Pablo Ramírez y Ana Claudia Narváez en la Ciudad de México el 26 de Agosto del 2017

NOTACIONES

Diminuendo a *niente*, creciendo del *niente*



Lo más piano posible **+p**

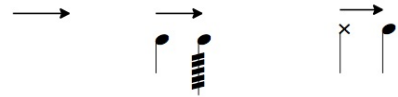
Furulato con aire sin nota definida



Nota con aire



Transición gradual entre dos formas de tocar una nota



Flauta

Clarinete

Fagot

Plasticidades

Manuel Velázquez

♩ = 74 - 78 **Rubato**
solo non vib

Clarinet in B♭

7 **A**

Fl. non vib → vib

Cl.

Bsn. non vib

12 **B**

Fl.

Cl.

Bsn.

19 **C**

Fl.

Cl.

Bsn.

D

23 *poco accel.*

Fl. *ff* *ppp* *mf* *pp* *mf* *pp*

Cl. *mf < f* *ppp* *mf* *p* *f* *ppp* *mp* *ppp*

Bsn. *mf < f* *p* *mf* *p* *mp* *< f* *mf dolce*

E

27 *♩ = 102 - 107*

Fl. *mp* *p* *mp* *pp* *mf* *pp* *pp < mf*

Cl. *mf* *p < f* *ppp* *p* *ppp* *mf dolce*

Bsn. *pp* *mp* *f* *p* *mf* *f*

31

Fl. *p* *mf* *p* *dolce* *f* *p*

Cl. *f* *p* *mf*

Bsn. *pp* *p* *mf* *p* *ppp* *f*

35

Fl. *f* *mp* *ff* *mp* *gliss.*

Cl. *p* *f* *p* *f* *p*

Bsn. *mp* *f* *p* *mf* *ppp*

F

39

Fl. *p* *mf* *p* *f* *p* *mf*

Cl. *p* *mf* *ppp* *f* *p* *f* *p* *f*

Bsn. *f* *p* *mf* *p* *mf* *f* *pp* *f* *pp*

42

Fl. *f* *mp* *f* *ff*

Cl. *p* *f*

Bsn. *f* *p* *mf* *f*

rit.

G

$\text{♩} = 83 - 86$

44

Fl. *mf* *+p* *pp* *p*

Cl. *mf* *mp* *pp* *p*

Bsn. *pp subito* *mf* *mp* *mf* *pp* *ppp*

rit.

H $\text{♩} = 74 - 78$

solo

48 **Rubato**

Bsn. *mf* *f* *pp subito* *mp* *ppp* *mf* *p* *f* *pp*

I

50

Fl. *+p* *mf* *+p* *f* *+p* *mf* *p*

Cl. *ppp* *mf* *ppp* *mf* *ppp* *f* *ppp* *f* *ff*

Bsn. *f* *p* *mf* *f* *ppp* *f* *ff* *pp* *f*

54 **J**

Fl. *f* *p* *f* *pp subito*

Cl. *mp* *f* *ppp* *f* *ppp subito*

Bsn. *ff* *mp* *f* *p* *mf* *f* *pp*

59

Fl. *f* *pp* *mf* *ff* *pp* *mf* *ppp*

Cl. *mf* *ff* *ppp* *ff* *pp* *mf* *ppp*

Bsn. *mp* *f* *mp* *p* *f* *pp* *f*

62 **K** *accel.*

Fl. *mf* *pp* *mf* *+p* *mf* *f* *mp*

Cl. *f* *pp* *f* *mf* *p < f* *pp*

Bsn. *pp* *mf* *pp* *f* *ff* *p < f* *ppp*

L $\text{♩} = 102 - 107$

Fl. *f* *p* *mf dolce*

Cl. *f* *ff* *p* *mf* *pp* *mf* *pp* *mp*

Bsn. *f* *ff* *p* *f* *p* *p* *mf*

70

Fl. *f* *p* *mf* *pp* *mp* *f* *p* *f* *et cis.*

Cl. *mf* *p* *mf* *pp* *mp* *f* *mf*

Bsn. *p* *mf* *dolce* *pp* *mf* *p* *mf* *pp*

M 76

Fl. *mp* *mf* *p* *f* *ppp* *f* *+p* *f*

Cl. *pp subito* *mf* *f* *mf* *p* *mf* *ppp* *f*

Bsn. *mf* *p* *mf* *p* *mf* *> p* *mf*

poco rit.

81

Fl. *+p* *f* *+p* *f* *+p* *f* *p* *f* *+p*

Cl. *ppp* *f* *ppp* *mf* *p* *f*

Bsn. *ppp* *f* *p* *mf* *f* *p* *f*

♩ = 74 - 78

N Rubato solo

87

Fl. *mf* *f* *+p* *f* *ppp* *f* *ff* *mp*

O 89

Fl. *p* *f* *p* *f* *ppp* *mf* *p*

Cl. *pp* *mf* *p* *mf* *ppp* *mf* *p*

Bsn. *p* *f* *p* *mf* *p* *f* *p* *mp*

vib *non vib*

113

Fl. *mf* *ppp* *f* *pp* *mf* *mf* *p* *f* *dolce*

Cl. *f* *ppp* *mf* *pp* *mf* *ppp* *f*

Bsn. *mf* *pp* *mf* *pp* *f* *ff* *p < f*

S

117

accel. ♩ = 102 - 107 *vib*

Fl. *p* *f* *ff* *p* *mf* *p* *mf* *pp*

Cl. *p* *f* *p* *mf dolce*

Bsn. *ppp* *f* *ff* *p* *f* *f*

121

Fl. *mf* *p* *mf* *p* *dolce* *f* *f* *mp*

Cl. *f* *p* *dolce* *f* *p* *f* *p*

Bsn. *pp* *p* *mf* *pp* *mf* *f* *p <*

T

127

Fl. *ff* *mp* *p* *mf* *p* *f*

Cl. *f* *p* *p* *mf* *ppp* *f*

Bsn. *mf* *ppp* *f* *p* *mf* *p* *mf* *f*

rit.

131

Fl. *p* *mf* *f* *mp* *f* *ff*

Cl. *p* *f* *p* *f* *p* *f*

Bsn. *pp* *f* *pp* *f* *p* *mf* *f*

U

♩ = 83 - 86

134

Fl. *mf* *+p* *pp* *pp* *f* *+p*

Cl. *mf* *mp* *ppp* *f* *ppp*

Bsn. *pp subito* *mf* *mp* *mf* *pp* *ppp* *f* *ppp*

rit.

139

Fl. *f* *+p* *f* *+p* *f* *p* *f*

Cl. *f* *ppp* *mf* *ppp*

Bsn. *f* *p* *mf* *f* *p* *f*

V

♩ = 70

144

Fl. *ppp* *f*

Cl. *mf* *f* *pp subito* *mp*

Bsn. *ppp* *mf* *p* *mf*

146

Fl. *f mp p p f p < f*

Cl. *ppp f pp < p p f p < f*

Bsn. *pp p f p < f*

Detailed description: This system contains measures 146 through 150. The Flute part (Fl.) starts with a dynamic of *f*, then *mp*, *p*, *f*, and *p < f*. The Clarinet part (Cl.) starts with *ppp*, then *f*, *pp < p*, *p*, *f*, and *p < f*. The Bassoon part (Bsn.) starts with *pp*, then *p*, *f*, and *p < f*. The music features various time signatures: 7/4, 8/4, 5/4, 4/4, and 3/4.

151

Fl. *p < f p p f pp < f*

Cl. *p < f p mf p < mf ppp < f*

Bsn. *p < f p p < mf ppp < f*

Detailed description: This system contains measures 151 through 155. The Flute part (Fl.) starts with *p < f*, then *p*, *p*, *f*, and *pp < f*. The Clarinet part (Cl.) starts with *p < f*, then *p*, *mf*, *p < mf*, and *ppp < f*. The Bassoon part (Bsn.) starts with *p < f*, then *p*, *p < mf*, and *ppp < f*. The music features various time signatures: 3/4, 4/4, 7/4, 5/4, 2/4, and 3/4.